

From: Kathryn Saunders
Sent: Thu, 16 Jul 2020 09:21:36 +1000
To: svc_t1connectp
Subject: Incoming from Think - Additional Sections - Childcare
Attachments: Architecture additional section 90-96 Glenmore Ridge Drive, Glenmore[1].pdf

#ECMBODY

From: Jonathon Wood <jonathon@thinkplanners.com.au>
Sent: Thursday, 16 July 2020 7:29 AM
To: Kathryn Saunders <kathryn.saunders@penrith.city>
Subject: Re: August SWCPP Meeting

EXTERNAL EMAIL: This email was received from outside the organisation. Use caution when clicking any links or opening attachments.

Hi Kathy,

Here are the sections on this one.

We have just broken into a separate set for ease of reference and understanding rather than the full set given there are so many plans.

Kind Regards,

Jonathon Wood
Director
P: 0425 134 158
www.thinkplanners.com.au



Copyright: The concepts & information contained in these reports are copyright of **Think Planners**. Use or duplication in part or full without written permission of **Think Planners** constitutes infringement of copyright.

From: Jonathon Wood <jonathon@thinkplanners.com.au>
Date: Wednesday, 15 July 2020 at 9:31 am

To: Kathryn Saunders <kathryn.saunders@penrith.city>
Subject: Re: August SWCPP Meeting

Thanks Kathy,

Chasing those and should have them next day or so.

Client is very keen to hit the 17th.

Kind Regards,

Jonathon Wood
Director
P: 0425 134 158
www.thinkplanners.com.au



Copyright: The concepts & information contained in these reports are copyright of **Think Planners**. Use or duplication in part or full without written permission of **Think Planners** constitutes infringement of copyright.

From: Kathryn Saunders <kathryn.saunders@penrith.city>
Date: Wednesday, 15 July 2020 at 9:07 am
To: Jonathon Wood <jonathon@thinkplanners.com.au>
Subject: RE: August SWCPP Meeting

Hi Jonathon,

Hope all is well. Do you have those sections through the child care area for Glenmore Park?

August dates are –

Meeting date **17 August**
My report to be complete by **29 July** (latest to Panel 3 August)

There is an additional meeting date available on the 31 August at this stage so that may be an option too. Thanks

Kind regards, Kathy

From: Jonathon Wood <jonathon@thinkplanners.com.au>
Sent: Monday, 13 July 2020 9:51 AM
To: Kathryn Saunders <kathryn.saunders@penrith.city>
Subject: August SWCPP Meeting

EXTERNAL EMAIL: This email was received from outside the organisation. Use caution when clicking any links or opening attachments.

Hi Kathy,

Hope you enjoyed the weekend.

I am just checking when the date is in August?

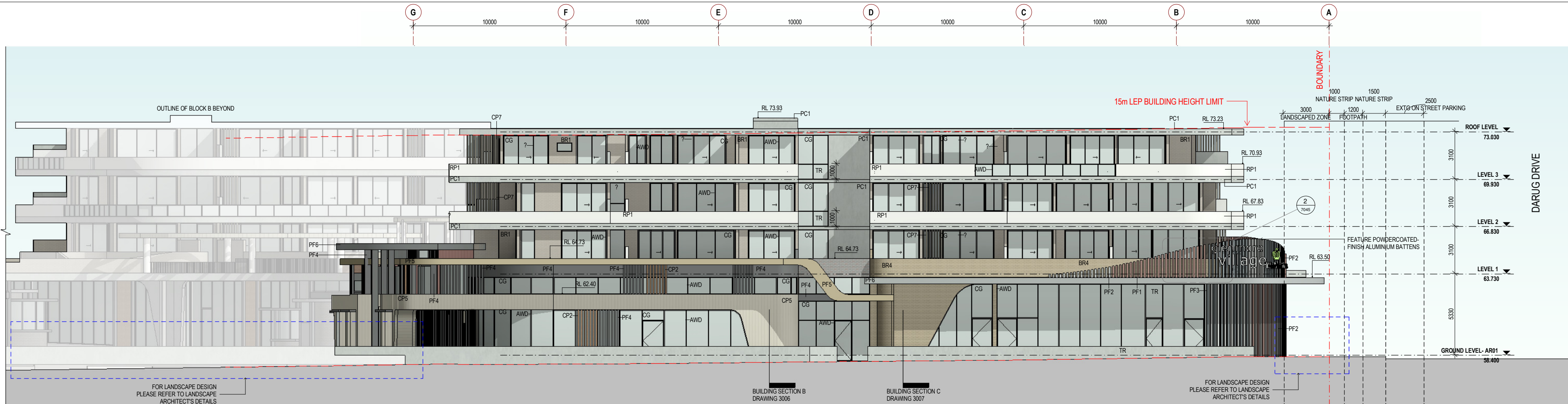
Just to tell Mintus and also to put in my diary as a placeholder.

Kind Regards,

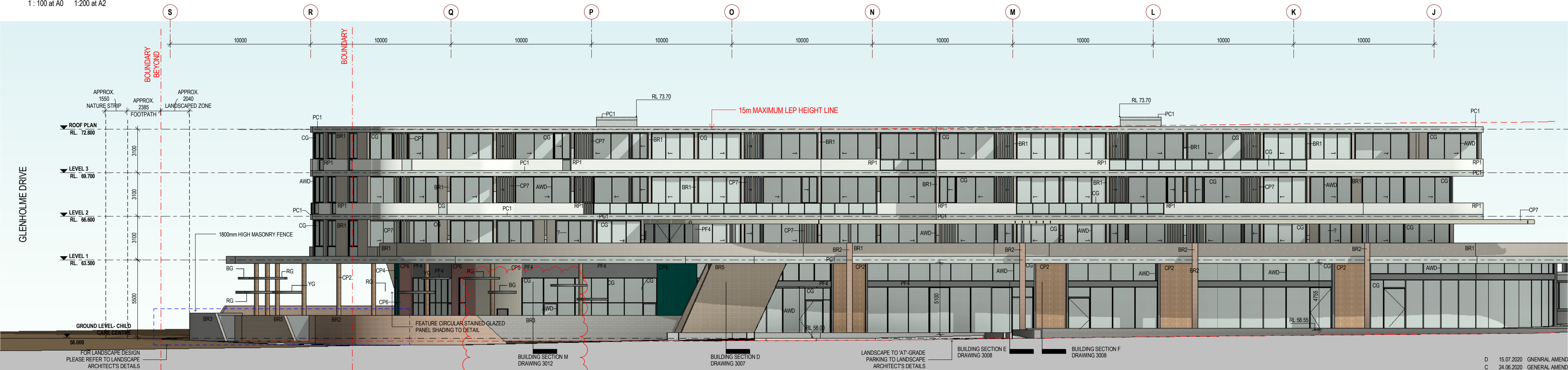
Jonathon Wood
Director
P: 0425 134 158
www.thinkplanners.com.au



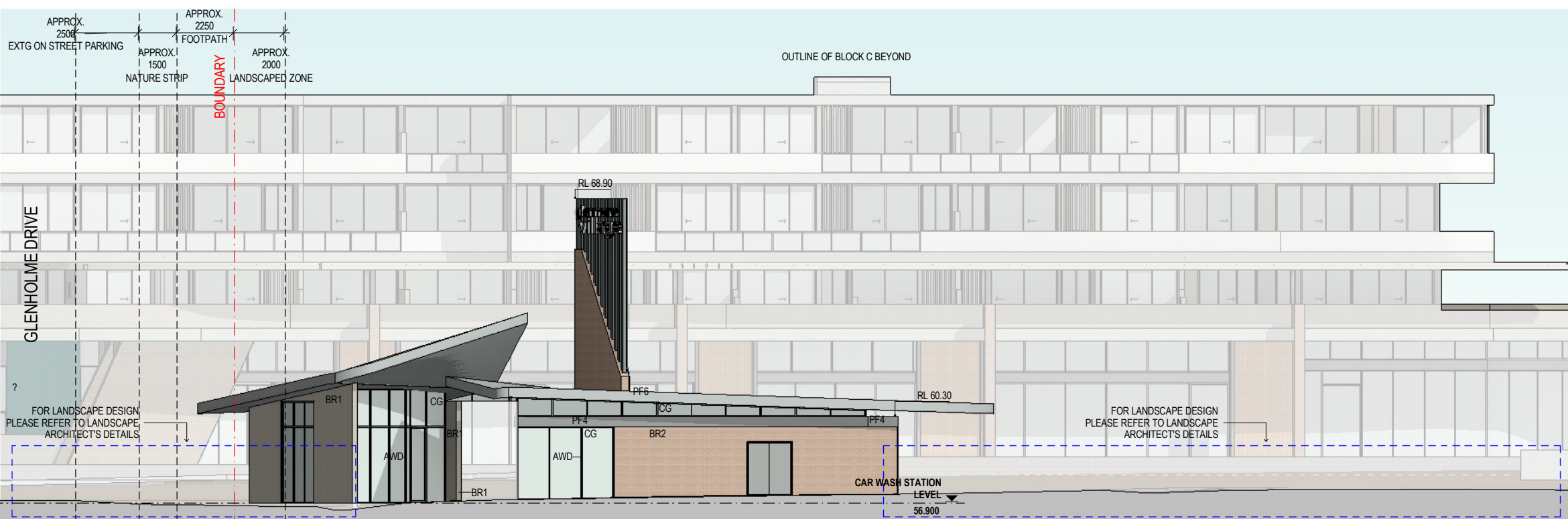
Copyright: The concepts & information contained in these reports are copyright of **Think Planners**. Use or duplication in part or full without written permission of **Think Planners** constitutes infringement of copyright.

**1 NORTH ELEVATION BLOCK A PART 1**

1:100 at A0 1:200 at A2

**2 NORTH ELEVATION BLOCK C**

1:100 at A0 1:200 at A2

**3 NORTH ELEVATION CAR WASH PART 2**

1:100 at A0 1:200 at A2

NOTE:-
APPLICATION OF VITRACORE G2 ALUMINIUM CLADDING SUBJECT
TO PROVISION OF CERTIFICATION TO SHOW COMPLIANCE OF
PERFORMANCE REQUIREMENT IN ACCORDANCE TO NCC.

REFERENCES
DRAWINGS TO BE READ IN CONJUNCTION WITH BUT NOT LIMITED TO
ALL STRUCTURAL ENGINEERS, STRUCTURAL ENGINEERS,
LANDSCAPE ARCHITECTS, AND OTHER ASSOCIATED PLANS & REPORTS
REFER TO THE BASIX REPORT FOR ADDITIONAL REQUIREMENTS

NOTES
ALL DIMENSIONS AND SETOUTS ARE TO BE VERIFIED ON SITE AND
ALL OMISSIONS OR ANY DISCREPANCIES TO BE NOTIFIED
TO THE ARCHITECT
FIGURED DIMENSIONS TO BE USED AT ALL TIME
DO NOT SCALE MEASUREMENTS OFF DRAWINGS

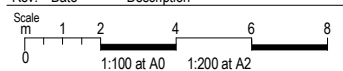
MATERIAL LEGEND

AWD	ALUMINIUM FRAME WINDOWS & DOORS - DULUX POWDERCOAT FINISH MONUMENT BLACK
BG	STEEL BLUE ROUGH STAINED GLASS
BR1	BOWRAL SIMMENTAL SILVER BRICK OR SIMILAR
BR2	BOWRAL CAPITOL RED BRICK OR SIMILAR
BR3	BOWRAL BLUE BRICK OR SIMILAR
BR4	BOWRAL GUERNSEY TAN BRICK OR SIMILAR
BR5	BOWRAL BROWN BRICK OR SIMILAR
CG	CLEAR GLASS
CP2	VITRACORE G2 VINTAGE WALNUT TIMBER LOOKING ALUMINIUM PANEL OR SIMILAR
CP3	VITRACORE G2 BOLD CREAM WHITE ALUMINIUM PANEL OR SIMILAR
CP4	VITRACORE G2 PINE GREEN ALUMINIUM PANEL OR SIMILAR
CP5	VITRACORE G2 CHAMPAGNE ALUMINIUM PANEL OR SIMILAR
CP6	VITRACORE G2 NOBLE RED ALUMINIUM PANEL OR SIMILAR

MATERIAL LEGEND

CP7	VITRACORE G2 CLASSIC OAK TIMBER LOOKING ALUMINIUM PANEL OR SIMILAR
MT1	HEXAGON MOSAIC WALL TILES OR SIMILAR
PC1	POLISHED CONCRETE FINISH OR SIMILAR
PF1	DULUX POWDERCOAT FINISH MANOR RED OR EQUIVALENT
PF2	XXXXXXXX
PF3	DULUX POWDERCOAT FINISH DARK GREY OR EQUIVALENT
PF4	DULUX POWDERCOAT FINISH MONUMENT BLACK OR EQUIVALENT
PF5	DULUX POWDERCOAT FINISH GOLD PEARL OR SIMILAR
PF6	DULUX POWDERCOAT FINISH PEWTER PEARL OR EQUIVALENT
RG	CHERRY RED ROUGH STAINED GLASS OR SIMILAR
RP1	RENDERED + PAINT FINISH DULUX WHISPER WHITE
RP2	RENDERED + PAINT FINISH DULUX DOMINO BLACK
TR	TRANSLUCENT GLAZING
YG	YELLOW ROUGH STAINED GLASS OR SIMILAR

Rev.	Date	Description
D	15.07.2020	GENERAL AMENDMENTS
C	24.06.2020	GENERAL AMENDMENTS
B	02.06.2020	GENERAL AMENDMENTS
A	17.05.2019	DA SUBMISSION



Project Architect

CD ARCHITECTSLEVEL 2, 60 PARK STREET
SYDNEY NSW 2000
P: 02 9267 2000
W: www.cdarchitects.com.au

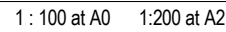
© Copyright
The copyright of this drawing together with any other documents prepared by
charlie design (CD) remains the property of CD. CD grants license for the
use of this document for the purpose for which it is intended. The license is
not transferable without permission from CD.
Nominated Architect: Jacob Yammine B95, A94 24 243 255 327

Project
PROPOSED MIXED USE DEVELOPMENT90-98 GLENMORE RIDGE
DRIVE, GLENMORE
PARK

Drawing Title

**NORTH
ELEVATIONS**

Job no.	Drawing no.	Rev.
J18429D	2001	D
Drawn by	Checked by	Date
AL	PA	MAY 2018

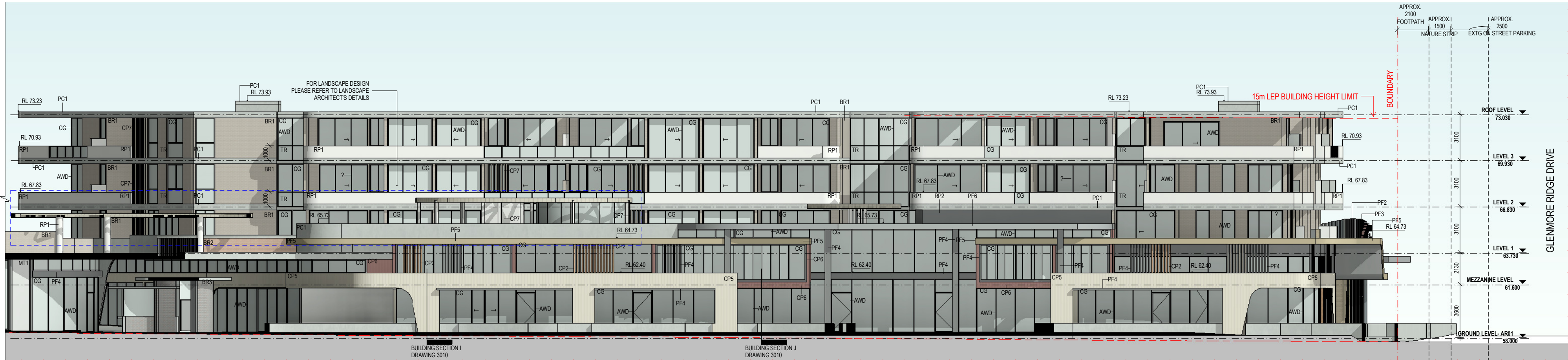


Job no.	Drawing no.	Rev.
J18429D	2002	B
Drawn by	Checked by	Date
AL	ZC	MAY 2018



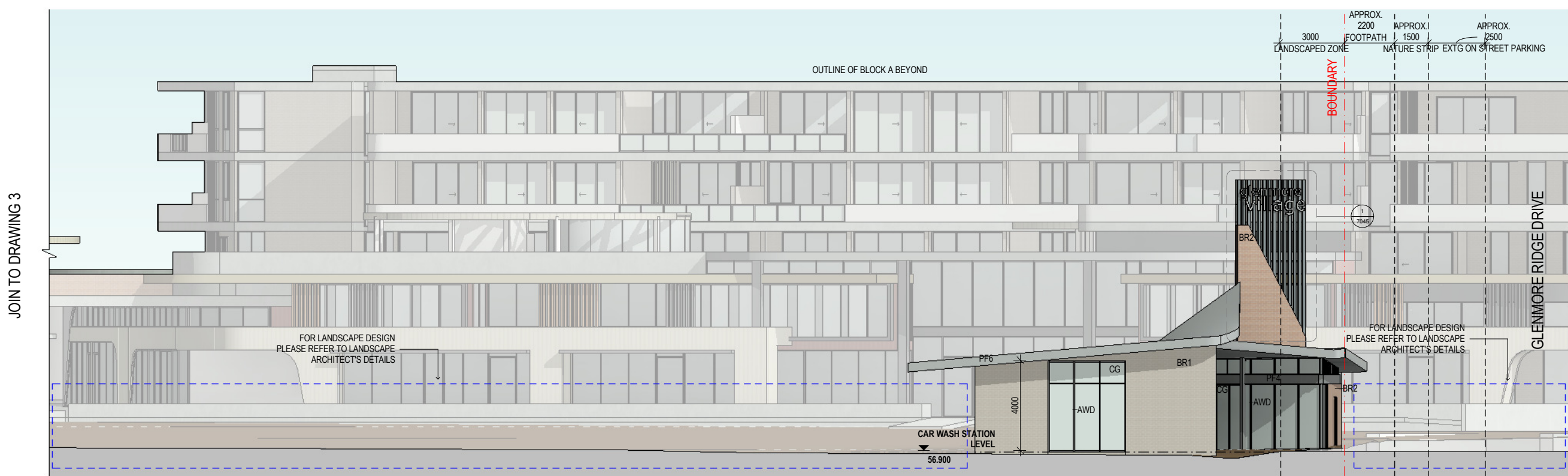
1 EAST ELEVATION BLOCK C

1 : 100 at A0 1:200 at A2



2 EAST ELEVATION BLOCK A

1 : 100 at A0 1:200 at A2



3 EAST ELEVATION CAR WASH PART 2

1 : 100 at A0 1:200 at A2

NOTE:- APPLICATION OF VITRACORE G2 ALUMINIUM CLADDING SUBJECT TO PROVISION OF CERTIFICATION TO SHOW COMPLIANCE OF PERFORMANCE REQUIREMENT IN ACCORDANCE TO NCC.

MATERIAL LEGEND

- AWD ALUMINUM FRAME WINDOWS & DOORS - DULUX POWDERCOAT FINISH MONUMENT BLACK
- BG STEEL BLUE ROUGH STAINED GLASS
- BR1 BOWRAL SIMMENTAL SILVER BRICK OR SIMILAR
- BR2 BOWRAL CAPITOL RED BRICK OR SIMILAR
- BR3 BOWRAL BLUE BRICK OR SIMILAR
- BR4 BOWRAL GUERNSEY TAN BRICK OR SIMILAR
- BR5 BOWRAL BROWN BRICK OR SIMILAR
- CG CLEAR GLASS
- CP2 VITRACORE G2 VINTAGE WALNUT TIMBER LOOKING ALUMINIUM PANEL OR SIMILAR
- CP3 VITRACORE G2 BOLD CREAM WHITE ALUMINIUM PANEL OR SIMILAR
- CP4 VITRACORE G2 PINE GREEN ALUMINIUM PANEL OR SIMILAR
- CP5 VITRACORE G2 CHAMPAGNE ALUMINIUM PANEL OR SIMILAR
- CP6 VITRACORE G2 NOBLE RED ALUMINIUM PANEL OR SIMILAR

MATERIAL LEGEND

- VITRACORE G2 CLASSIC OAK TIMBER LOOKING ALUMINIUM PANEL OR SIMILAR
- MT1 HEXAGON MOSAIC WALL TILES OR SIMILAR
- PC1 POLISHED CONCRETE FINISH OR SIMILAR
- PF1 DULUX POWDERCOAT FINISH MANOR RED OR EQUIVALENT
- PF2 XXXXXXX
- PF3 DULUX POWDERCOAT FINISH DARK GREY OR EQUIVALENT
- PF4 DULUX POWDERCOAT FINISH MONUMENT BLACK OR EQUIVALENT
- PF5 DULUX POWDERCOAT FINISH GOLD PEARL OR SIMILAR
- PF6 DULUX POWDERCOAT FINISH PEWTER PEARL OR EQUIVALENT
- RG CHERRY RED ROUGH STAINED GLASS OR SIMILAR
- RP1 RENDERED + PAINT FINISH DULUX WHISPER WHITE
- RP2 RENDERED + PAINT FINISH DULUX DOMINO BLACK
- TR TRANSLUCENT GLAZING
- YG YELLOW ROUGH STAINED GLASS OR SIMILAR


REFERENCES
DRAWINGS TO BE READ IN CONJUNCTION WITH BUT NOT LIMITED TO:
ALL STRUCTURAL ENGINEERS, STRUCTURAL ENGINEERS,
LANDSCAPE ARCHITECTS, AND OTHER ASSOCIATED PLANS & REPORTS
REFER TO THE BASIS REPORT FOR ADDITIONAL REQUIREMENTS

NOTES
ALL DIMENSIONS AND SETOUTS ARE TO BE VERIFIED ON SITE AND
ALL OMISSIONS OR ANY DISCREPANCIES TO BE NOTIFIED
TO THE ARCHITECT
FOUR DIMENSIONS TO BE USED AT ALL TIME
DO NOT SCALE MEASUREMENTS OFF DRAWINGS

JOIN TO DRAWING 3

C	24.06.2020	GENERAL AMENDMENTS
B	02.06.2020	GENERAL AMENDMENTS
A	17.05.2019	DA SUBMISSION
Rev.	Date	Description
Scale	0 1 2 4 6 8	
	1:100 at A0 1:200 at A2	

Project Architect



CD
ARCHITECTS

LEVEL 2, 60 PARK STREET
SYDNEY NSW 2000
P 02 9267 2000
W www.cdarchitects.com.au

© Copyright

The copyright of this drawing together with any other documents prepared by charnie design (CD) remains the property of CD. CD grants license for the use of this document for the purpose for which it is intended. The license is not transferable without permission from CD.

Nominated Architect: Jacob Yammine E995, A/N 24 243 255 327

Project

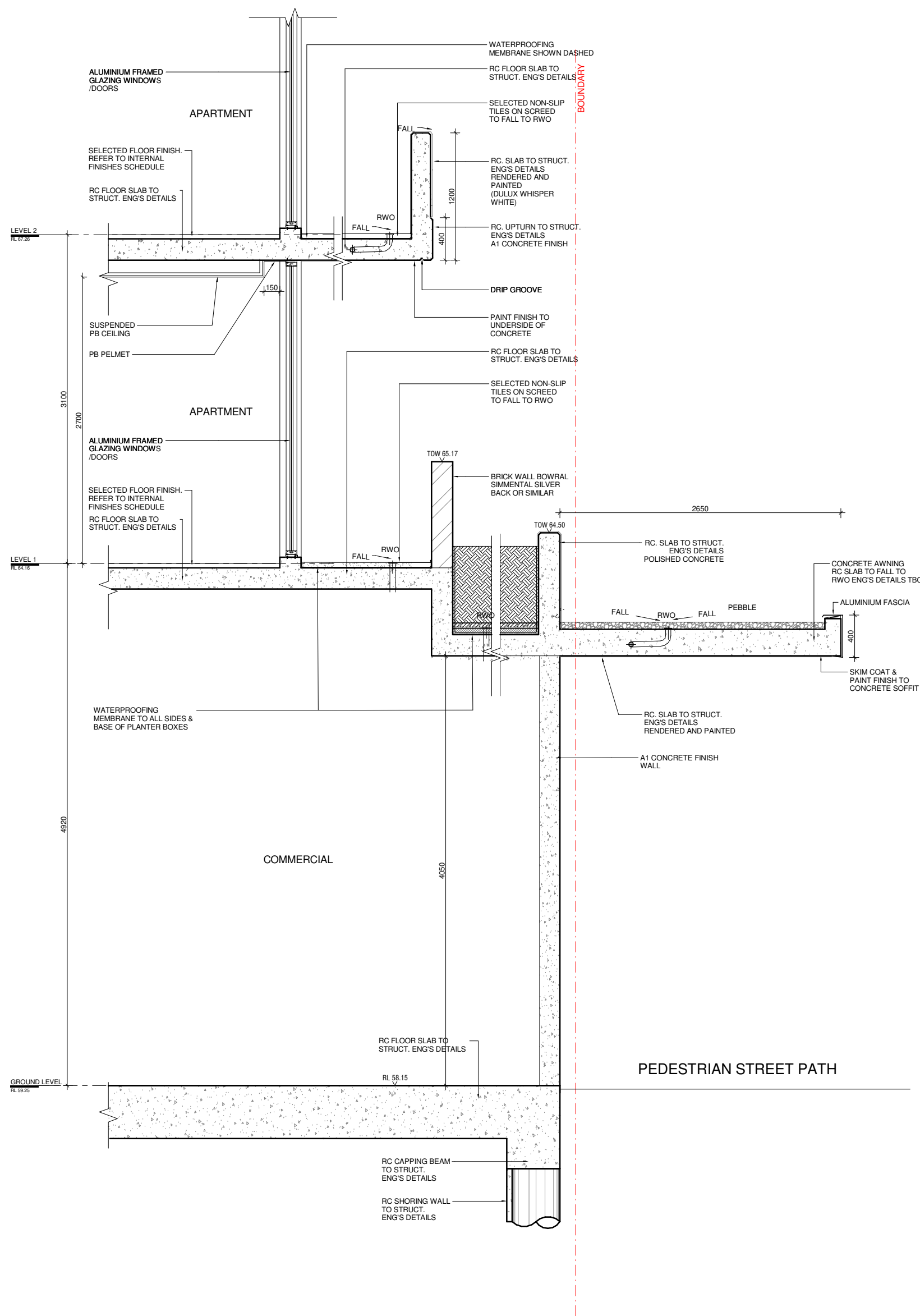
PROPOSED MIXED USE DEVELOPMENT

90-98 GLENMORE RIDGE
DRIVE, GLENMORE
PARK

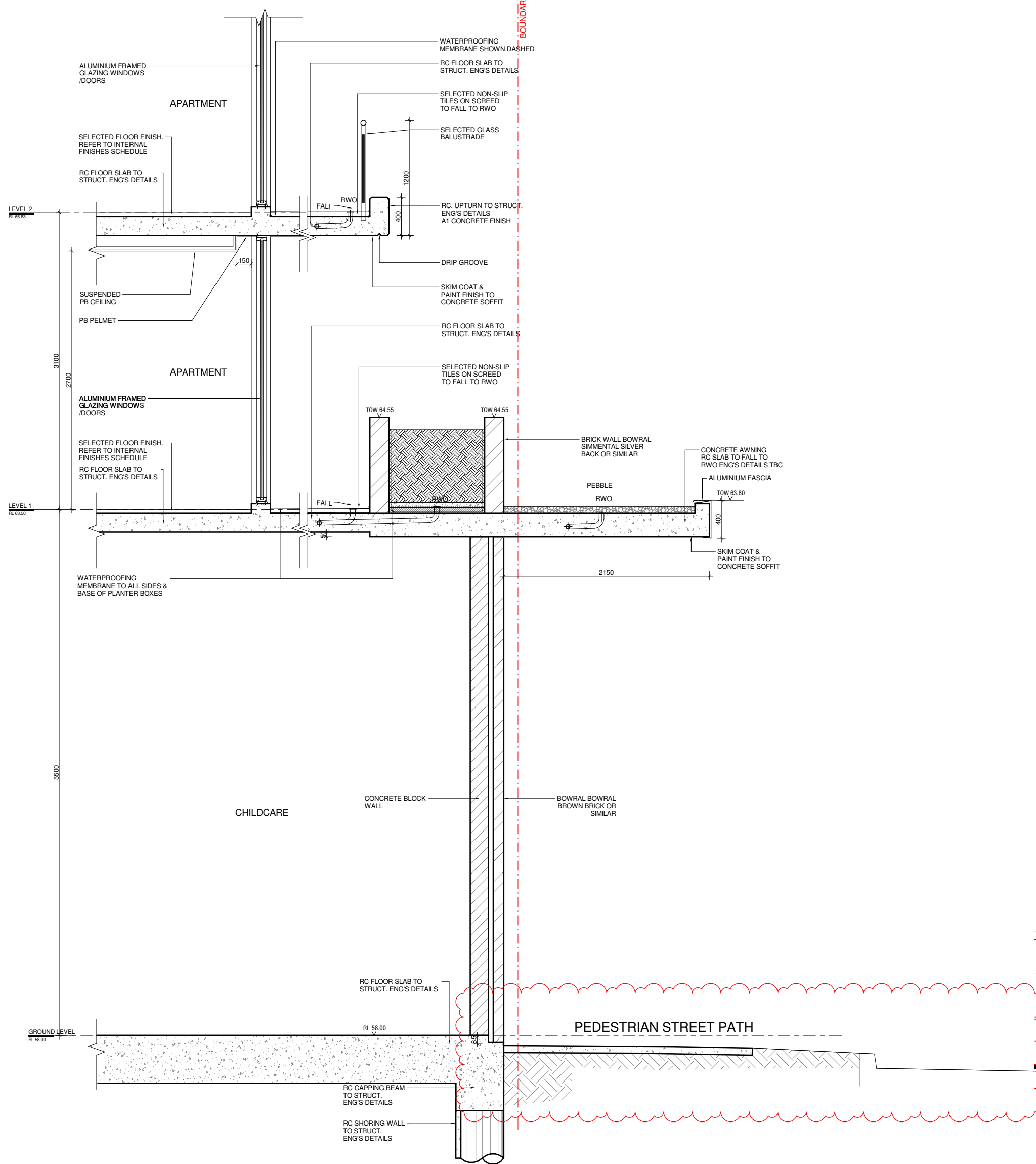
Drawing Title

**EAST
ELEVATIONS**

Job no.	Drawing no.	Rev.
J18429D	2003	C
Drawn by	Checked by	Date
AL	PA	MAY 2018



1 BUILDING SECTION DETAIL G
1 : 20 at A0 1:40 at A2



2 BUILDING SECTION DETAIL H
1 : 20 at A0 1:40 at A2

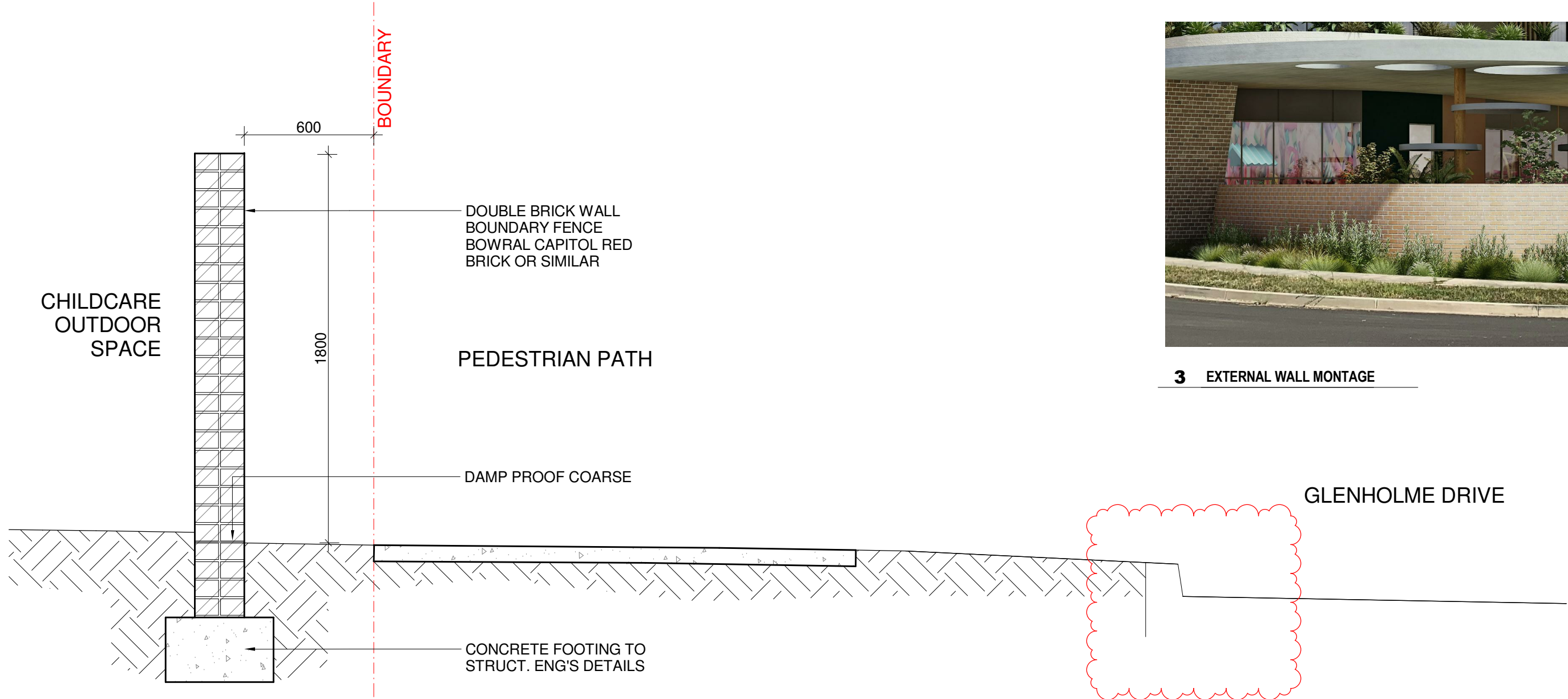
B	15.07.2020	GENERAL AMENDMENTS
A	24.06.2020	GENERAL AMENDMENTS
Rev.	Date	Description

Project Architect
CDARCHITECTS
LEVEL 2, 60 PARK STREET
SYDNEY NSW 2000
P: 02 9267 2000
W: www.cdarchitects.com.au

© Copyright
The copyright of this drawing together with any other documents prepared by
charme design (CD) remains the property of CD. CD grants licence for the
use of this document for the purpose for which it is intended. The licence is
not transferable without permission from CD.
Nominated Architect: Jacob Yammine B965, A916 24 243 205 327

Project
PROPOSED MIXED USE DEVELOPMENT
90-98 GLENMORE RIDGE
DRIVE, GLENMORE
PARK
Drawing Title
BUILDING SECTION DETAIL G & H

Job no.	Drawing no.	Rev.
J18429D	3009	B
Drawn by	Checked by	Date
PY	RJ	MAY 2018

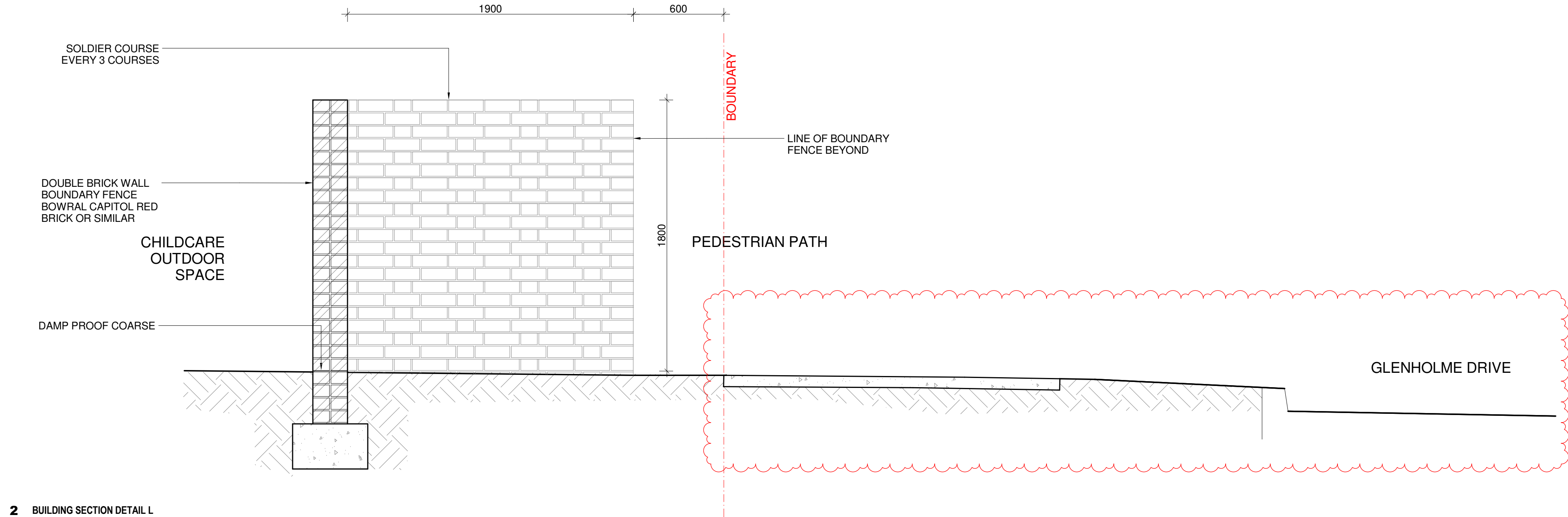


1 BUILDING SECTION DETAIL K

1 : 10 at A0 1:20 at A2



3 EXTERNAL WALL MONTAGE



2 BUILDING SECTION DETAIL L

1 : 10 at A0 1:20 at A2

REFERENCES

DRAWINGS TO BE READ IN CONJUNCTION WITH BUT NOT LIMITED TO ALL STRUCTURAL ENGINEERS, STORMWATER ENGINEERS, LANDSCAPE ARCHITECTS, AND OTHER ASSOCIATED PLANS & REPORTS REFER TO THE BAAIX REPORT FOR ADDITIONAL REQUIREMENTS

NOTES

ALL DIMENSIONS AND SETOUTS ARE TO BE VERIFIED ON SITE AND ALL OMISSIONS OR ANY DISCREPANCIES TO BE NOTIFIED TO THE ARCHITECT
FIGURED DIMENSIONS TO BE USED AT ALL TIME
DO NOT SCALE MEASUREMENTS OFF DRAWINGS

B	15.07.2020	GENERAL AMENDMENTS
A	24.06.2020	GENERAL AMENDMENTS
Rev.	Date	Description

Project Architect

CDARCHITECTS

LEVEL 2, 60 PARK STREET
SYDNEY NSW 2000
P: 02 9267 2000
W: www.cdarchitects.com.au

© Copyright

The copyright of this drawing together with any other documents prepared by charnie design (CD) remains the property of CD. CD grants licence for the use of this document for the purpose for which it is intended. The licence is not transferable without permission from CD.
Nominated Architect: Jacob Yammine B965, A916 24 243 205 327

Project

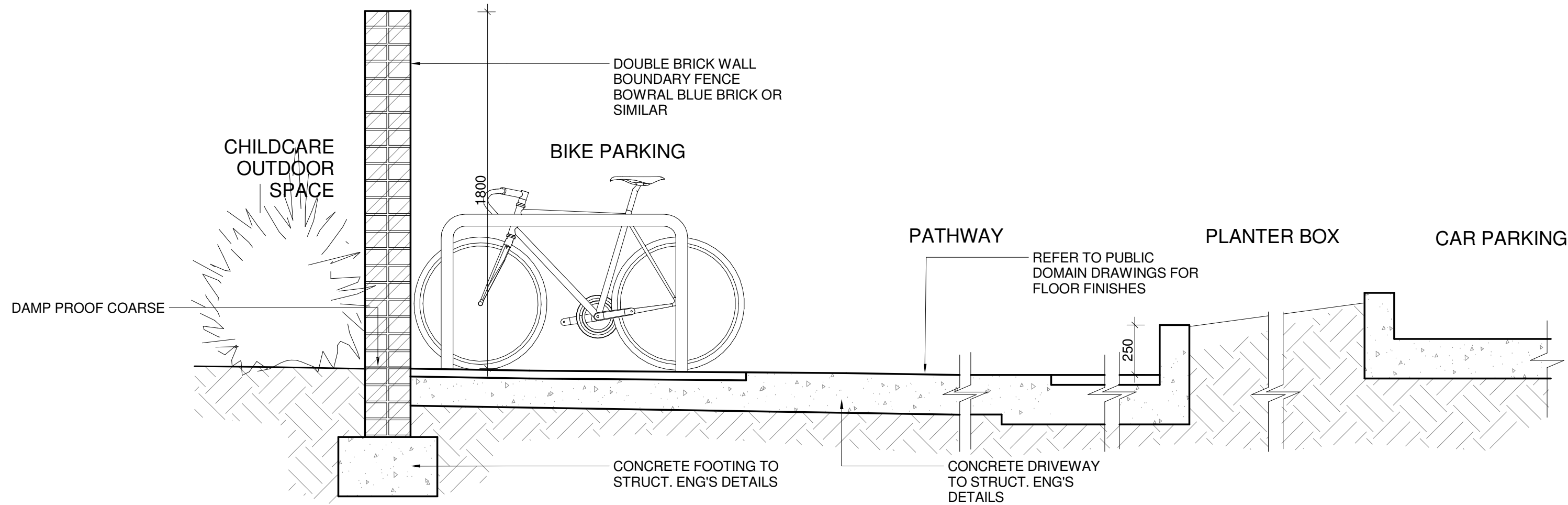
PROPOSED MIXED USE DEVELOPMENT

90-98 GLENMORE RIDGE
DRIVE, GLENMORE
PARK

Drawing Title

BUILDING SECTION DETAIL K & L

Job no.	Drawing no.	Rev.
J18429D	3011	B
Drawn by	Checked by	Date
PY	JY	MAY 2018



1 BUILDING SECTION DETAIL M
1 : 10 at A0 1:20 at A2

REFERENCES
DRAWINGS TO BE READ IN CONJUNCTION WITH BUT NOT LIMITED TO:
ALL STRUCTURAL ENGINEERS, STORMWATER ENGINEERS,
LANDSCAPE ARCHITECTS, AND OTHER ASSOCIATED PLANS & REPORTS
REFER TO THE BASIX REPORT FOR ADDITIONAL REQUIREMENTS

NOTES
ALL DIMENSIONS AND SETOUTS ARE TO BE VERIFIED ON SITE AND
ALL OMISSIONS OR ANY DISCREPANCIES TO BE NOTIFIED
TO THE ARCHITECT
FIGURED DIMENSIONS TO BE USED AT ALL TIME
DO NOT SCALE MEASUREMENTS OFF DRAWINGS

A 15.07.2020 GENERAL AMENDMENTS		
Rev.	Date	Description
01		
Scale		
0		

Project Architect

CDARCHITECTS

LEVEL 2, 60 PARK STREET
SYDNEY NSW 2000
P: 02 9267 2000
W: www.cdarchitects.com.au

© Copyright

The copyright of this drawing together with any other documents prepared by
charina design (CD) remains the property of CD. CD grants licence for the
use of this document for the purpose for which it is intended. The licence is
not transferable without permission from CD.

Nominated Architect: Jacob Yammine ES95, AIN 24 243 205 327

Project

PROPOSED MIXED USE DEVELOPMENT

90-98 GLENMORE RIDGE
DRIVE, GLENMORE
PARK

Drawing Title

BUILDING SECTION DETAIL M

Job no.	Drawing no.	Rev.
J18429D	3012	A
Drawn by	Checked by	Date
Author	Checker	MAY 2018